



Coffee Shops / Ice Cream / Convenience Stores



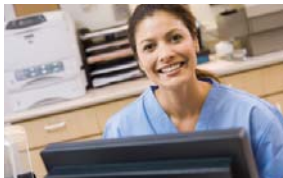
Table Service / Quick Service Restaurants



Hotel Front Desk / Airline Counters / Financial



Dusty Environments Like Pizza and Bakeries



Medical / Automotive Services / Salons

Fanless All-in-One Android Touch Screen Terminal



Vivid LED Backlight for Reliability and Energy Savings

The SAM4S SAP-4800 touch screen terminal is powered with an ARM Cortex™ **dual-core fanless** processor to efficiently run a variety of android software applications.

- Stylish 15" LCD with 5-Wire Resistive Touch
- ARM Cortex™-A9 Dual Core 1.0GHz Fanless Processor
- 1GB RAM
- Android Operating System
- Standard Bluetooth and WiFi
- Integrated Front-Facing Card Reader
- Optional Integrated 2-Line by 20 Character VFD Customer Display
- Easily Wall Mountable – Standard VESA Configuration



SAP-4800 Touch Screen Terminal



White Cabinet Color Available by Special Order



Optional Integrated VFD Customer Display



Two Cash Drawer Ports Supports Optional Cash Drawers



Standard VESA Configuration Fits a Variety of Wall and Ceiling Mount Brackets

Options and Upgrades

Configure your system with these easy to add options:

- Integrated VFD Customer Display – 2 Lines x 20 Characters
- Wall Mount Bracket with Standard VESA Configuration

Applications

The attractive, powerful SAP-4800 fanless terminal is ideal for harsh environments like pizza, quick service restaurants, bakeries and industrial shop floors and for processor intensive applications including table service, retail scanning and many more:

- Airline Counters
- Automotive Services
- Convenience Stores
- Digital Signage
- Dry Cleaners
- Financial/Banking
- Food & Drug Stores
- Gaming
- Hospitality
- Hotel Front Desk
- Interactive Workstations
- Kiosks
- Kitchen Video
- Medical
- Message Stations
- Point of Sale
- Quick Service Restaurant
- Rental Car
- Rental Stores
- Retail Scanning
- Self Service
- Streaming Video
- Table Service Restaurant
- Training
- Unattended Workstations

Connectivity

- A** COM4 (Powered)
- B** USB (2)
- C** Drawer 1
- D** Drawer 2
- E** LAN
- F** COM2 (Powered)
- G** COM1 (Powered)
- H** COM3 (Powered)
- I** DC In (Power)

Specifications

Processor:	ARM Cortex™- A9 1.0GHz Dual Core
Display LCD:	15" LCD with LED Backlighting
Resolution:	1024 x 768
Brightness:	Adjustable Up to 350 cd/m2
Integrated Speakers:	Two (Left & Right) Integrated 1.5W Speakers
Touch Panel:	5-Wire Resistive Touch
MCR:	Integrated USB Interface Triple Track MCR
Memory –	RAM: 1GB DDR3 Flash: 8GB Nand Flash
Serial Ports:	COM1, COM2 = DB9M With Pin 9 Voltage (+5V) COM3 = RJ45 With Pin 1 Voltage (+5V) COM4 = RJ45 With Pin 1 Voltage (+12V) (For Customer VFD)
USB Ports:	Four V2.0 (2 Left Side / 2 Bottom)
Cash Drawer Ports:	Two RJ11, 12V or 24V Selectable by Software (Maximum 2 Drawers – Supports Open/Close)
LAN Port:	One RJ45 10/100 Base-T
Wireless –	WiFi: Compatible with IEEE802.11b/g/n Bluetooth: v4.0+HS Standard – Backward Comptible with v1.1, v1.2 and v.2.1+EDR Up to 328 Feet (100m) Operating Range
SD Card:	One SDHC Compatible
Power Supply:	60W, 12V/5A External Power Adaptor 100-240V 50-60Hz
Current / Power Usage:	0.37A / 45W
Operating Temperature:	32° F to 95° F (0° C to 35° C)
Standard O/S:	Android Operating System
Dimensions –	Base: 11"W x 7-3/8"H x 8-5/8"D Overall: 14-1/8"W x 12-1/8"H x 8-5/8"D Shipping Carton: 20-1/4"W x 13"H x 16"D
Weight –	Product: 11.84 lbs. Shipping: 16.06 lbs.
Safety and EMI:	FCC, RoHS

